



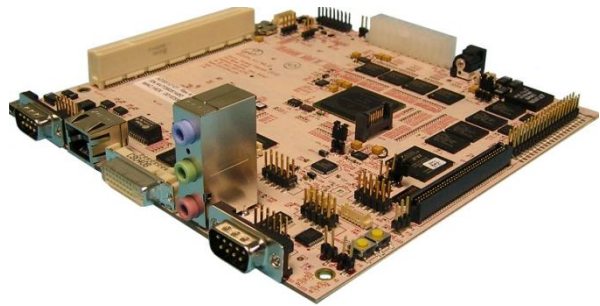
# ADS512101

## Advanced Development System

ADS512101 is a new mini-ITX embedded mainboard advanced development solution for *Freescale's MPC5121e*.

### Mini-ITX Mainboard

- LVDS 24bit (LCD), XGA, HDMI Video
- Stereo Audio with AC97, in/out/aux
- PATA (IDE) or Micro SD Card
- PCI, mini-PCI (radio slots)
- 10/100 Ethernet copper
- RS232, CAN (2 each, D-Sub and RJ)
- 512 MB of DDR2 RAM
- Power save hibernate
- NOR, NAND, and backup FLASH
- Local bus IO connector
- USB A, B, OTG
- JTAG and control CPLD



**Board Size :** 17x17cm Standard  
**Weight:** 200 g (varies with configuration)  
**Power:** Standard ATX or wallcube  
**Operating Temperature**  
0°C to 70°C standard  
-40°C to 85°C industrial

### Shipped with:

- ADS512101
- Power Supply & Adapters
- Null Modem Cable
- Mini USB Adaptor
- Pre-Loaded U-Boot & Linux
- Quick Start Guide
- Warranty
- CDs with:
  - Schematics
  - User Manual
  - CodeWarrior (Linux & Windows)
  - Third Party Info



Available from stock for \$1999<sup>00</sup>  
Visit our Store: [store.silicontkx.com](http://store.silicontkx.com)

**ADS512101 is the first in the *Sepia* series of mini-ITX mainboards called Hellrosa. STx will also offers these modules and upgrades:**

### **Ruggedization Service**

Industrial Temp -40°C to 85°C or more  
Thermal Cycle/Burn-In  
Shock, Vibration  
Coating/humidity  
Call for Custom

### **Add-On Feature Modules**

Bluetooth Radio  
Camera/Image Capture  
Microphone  
GPS Module  
Echo Cancellation Module  
Profibus/Fieldbus

### **Accessories**

Cases, customized backplates  
LCD panel or monitor, inverter, touchscreen  
Radios: USB 802.11 & MiniPCI Wi-Fi  
DRAM modules & memory upgrades  
Hard drive (IDE or SATA) or solid-state (FLASH)  
CDROM or DVD drive  
PCI Riser cards and other peripherals  
Cables of every kind: Power: ATX/ 4pin  
ATX/AC extender; IDE, ultra IDE;  
data and power; LVDS video (LCD);  
VGA/HDMI; VGA splitter; USB- various;  
Firewire 1394; 232, 422, CAN, J1850;  
Audio RCA

**And more!**

## **Sepia Series Software**

### **Operating Systems**

Linux      WRS  
QNX        GHS  
Other IDE and RTOS

### **Graphics Solutions**

ALT  
Tilcon  
KDE

### **Cellular Connectivity**

### **GPS location**

### **Touchscreen**

### **Bluetooth**

### **Wireless (802.11, 802.16)**

### **Database client**

## **Sepia Applications**

- Automotive Telematics
- Industrial Automation
- SCADA/Instrumentation
- Medical devices
- Ruggedized long-life products
- Heavy Equipment: Construction, truck, bus, fleet, asset track

### **Contact us!**

[ADS512101@silicontkx.com](mailto:ADS512101@silicontkx.com)

Silicon Turnkey Express

749 Miner Rd.

Highland Hts., OH 44143

PH: 440 461 4700

FX: 440 461 4329