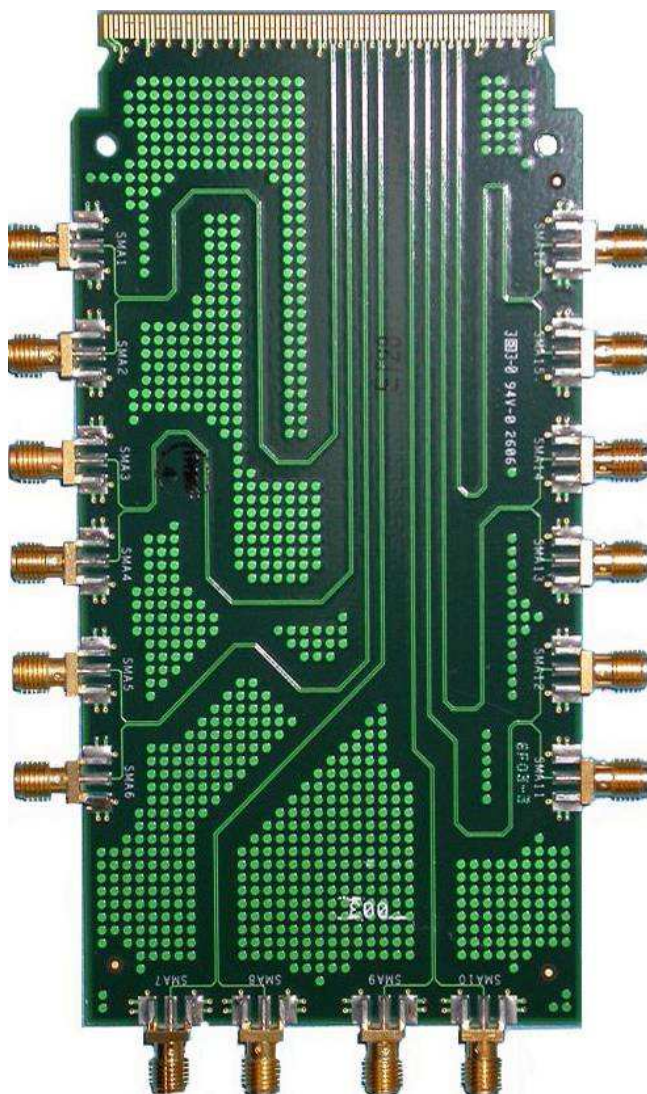


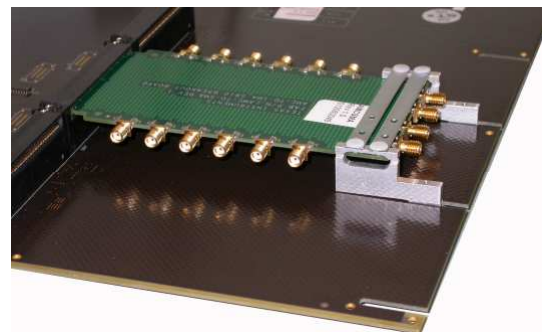
AMCSMA Breakout Board

AMC.0 (.1, .2, .3, .4) Fabric Development Tool
Interfaces the standard 170 pin Yamaichi connector to 16 SMA connectors.

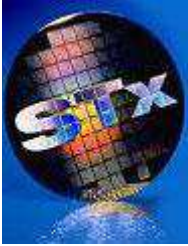


Pinout is: B44-B54 and B59-B69
(These are the RIO transmit and received signals of N0 through N3 and P0 through P3)

Includes AMC mounting hardware for SRDP or SSRP platforms.



Available from stock at \$695⁰⁰ each
Contact STx to order or for more information



Fabric Embedded Tools: Make your RapidIO System easy to setup and debug using a management plane software tool, "RapidFET": at www.FETCORP.com

Silicon Partners:

- AMCC..... www.amcc.com
- DENX..... www.denx.com
- IDT..... www.idt.com
- RIO Lab..... www.rio-lab.com
- Texas Instruments..... www.ti.com
- Tundra Semiconductor..... www.tundra.com
- Zarlink..... www.zarlink.com

Original reference designs are available for customization and quick turn manufacturing!

Serial RapidIO Products Available From STx

- ★AMC70K2000 – Hi Perf. Blade, 4 TI DSP & IDT PPS
 - ★AMCLB Tool – AMC interface for port testing
 - ★AMCPQ3 – AMC MPC8548/3, x4 SRIO, 1 GEnet
 - ★AMCSMA Tool – AMC with SMA jacks for data signals
 - ★Arches – 2 PPC MPUs AMC with SRIO & PCIe
 - ★EVC70K2000 – IDT Pre-Processor switch carrier platform
 - ★FPGA Mezzanine – FPGA daughter card
 - ★Half-Pipe – AMC SRIO Bridge to Infiniband
 - ★LRDK – Linux RapidIO Development Kit
 - ★Mezz Adapter – Infiniband to FPGA Mezzanine card
 - ★RD-460GT-KIT-1 – 2 PPC MPUs AMC with SRIO & PCIe
 - ★SRDP – Tundra switch carrier board: 568a, 576a, 578a
 - ★SSRP – Switch-less carrier for interoperability testing
 - ★ZLE60304,1 – Zarlink optical extender up to 25Gbps
- Check our web site for updates: www.silicontkx.com*

Contact

Silicon Turnkey Express
749 Miner Rd.
Highland Hts., OH 44143

Partners



info@silicontkx.com
www.silicontkx.com
PH: 440 461 4700 119
FX: 440 461 4329