

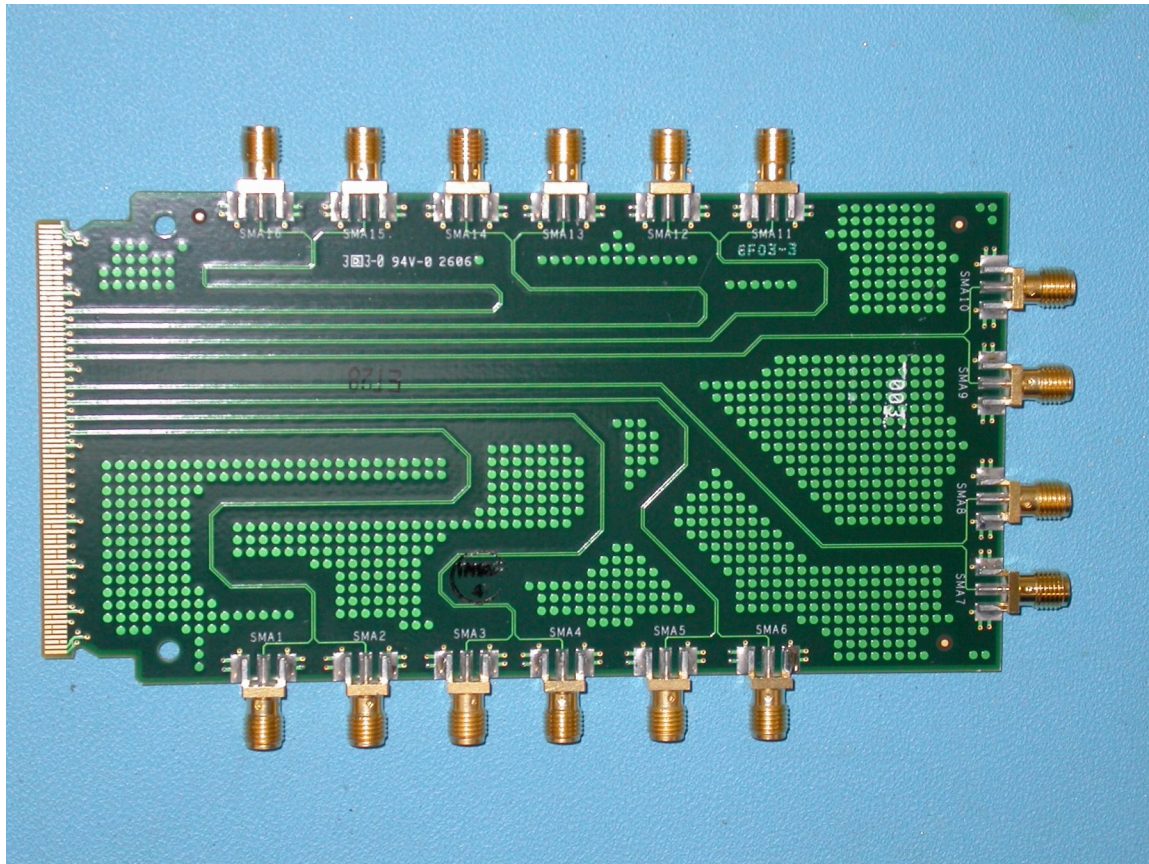


SMA BREAKOUT BOARD

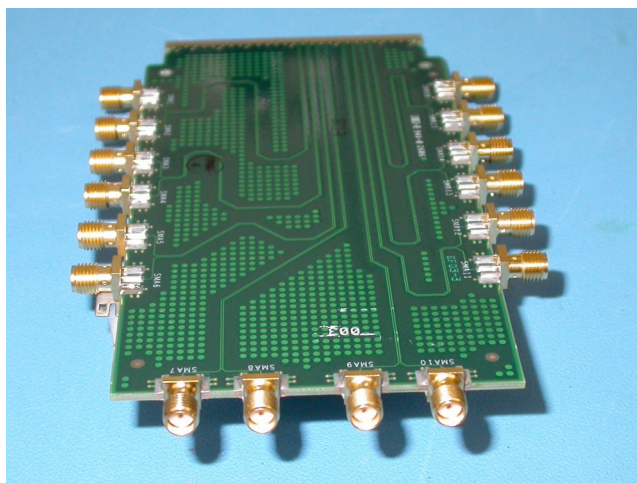
AMC.0 (.1,.2,.3,.4) Fabric Development Tool

Interfaces the standard 170 pin Yamaichi connector to 16 SMA connectors- Pinout is: B44-B54 and B59-B69

(These are the RIO transmit and receive signals of N0 thru N3 and P0 thru P3)



Available and in stock: Price for qty 1-9, \$475



Contact:
STx (Silicon Turnkey
Express)
749 Miner Road
Highland Heights, Ohio
44143

ph: 440-461-4700 x182
fax 440-461-4329
WWW.silicontkx.com



ATCA LOOPBACK BOARD

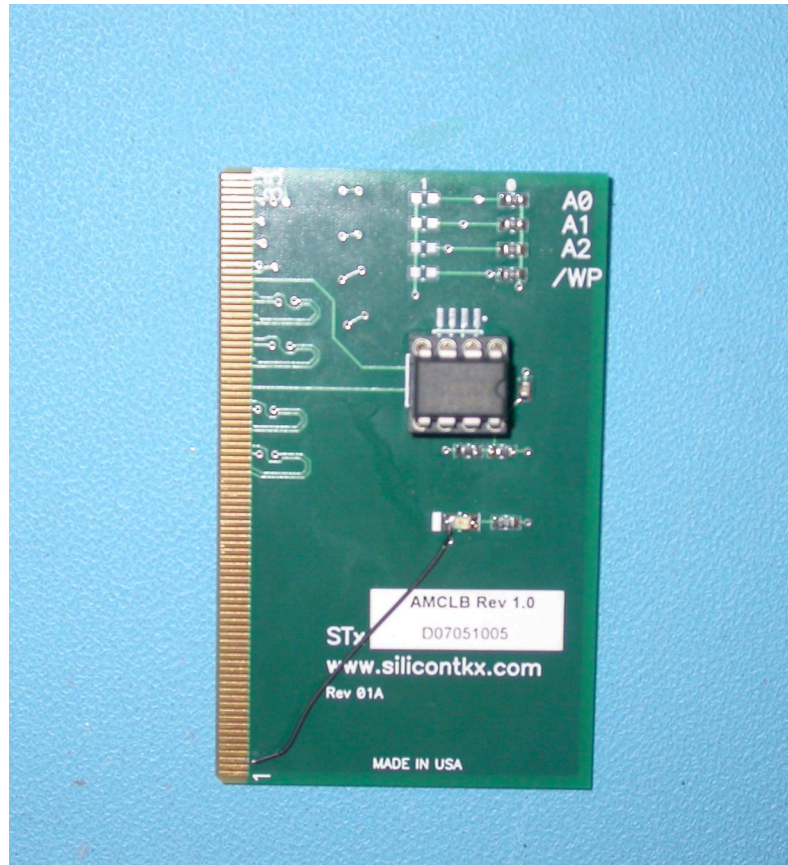
AMC.0 (.1,.2,.3,.4) Fabric Development Tool

Loops signals on 170 pin Yamaichi connectors to each other

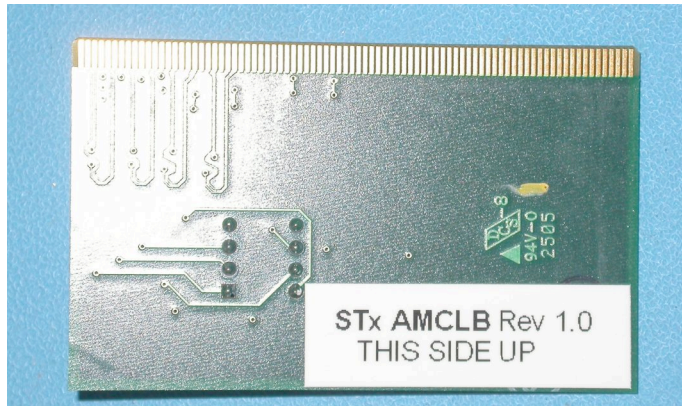
Pin connectors loopback connections

From To

- 44 47
- 45 48
- 50 53
- 51 54
- 59 62
- 60 63
- 65 68
- 66 69
- 87 90
- 88 91
- 93 96
- 94 97
- 99 102
- 100 103
- 105 108
- 106 109



In Stock now. Price for qty 1-9, \$195



Contact:
STx (Silicon Turnkey Express)
749 Miner Road
Highland Heights, Ohio
44143

ph: 440-461-4700 x182
fax 440-461-4329
WWW.silicontkx.com