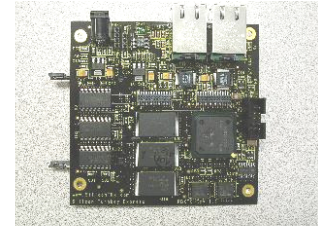


# XTc Single Board Computer and ODM Reference Board



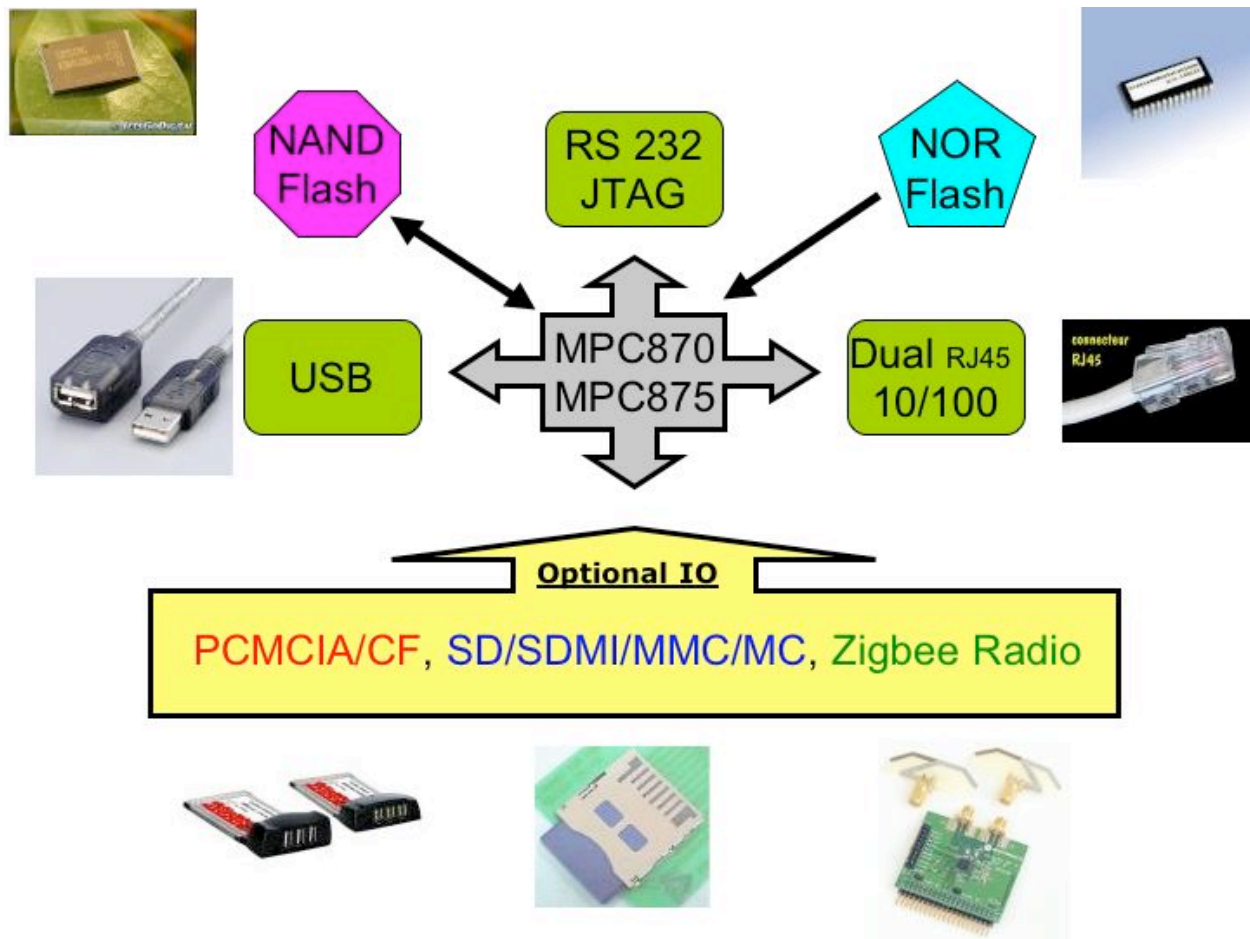
- General purpose industrial control SBC
- Industrial wireless access point
- Lowest cost secure server
- Zigbee internetworking gateway

XTc SBC



Based on the Freescale PowerQUICC 1 MPC870 or MPC875

## XTc Block Diagram



**Silicon Turnkey Express, [WWW.SiliconTKx.com](http://WWW.SiliconTKx.com)  
 749 Miner Road Cleveland, Ohio 44143  
 PH 440 461 4700 x 176, 183 FAX 440 461 4329**

[Pricing- call for pricing and options](#)

Qty 1: \$299

### **MPC87x features**

2 independent 10/100 e-nets  
66 - 133Mhz 32bit PowerPC

Hardware encryption (875 only)  
Optional microcode  
User defined serial ports  
JTAG/BDM port  
RS-232 port

### **XTc specific features**

Local bus/ Zigbee port  
CF card interface option  
Single or dual 8 bit Nor flash  
Single Nand flash option

### **Ordering information**

XTc-870L-XXX  
XTc-875L-XXX  
(3 digit clock speed e.g. 066)

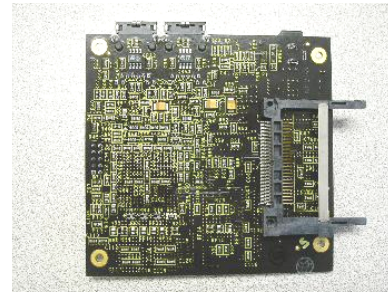
*With every board you get: wall power supply, cable kit (Serial, Ethernet), warranty card, PDF schematic, & software resource CD.*

**Applications include: Zigbee internetworking gateway, stateful packet management routing at line rate, deterministic IP and ATM inter-networking, network security , VOIP/telecom gateway, high-speed test & measurement, industrial networking, general embedded computing**

### **Fully Loaded Board**

**You get:** CF, 2 enet, serial, Nand flash, Nor flash (1 or 2), BDM/Jtag, Zigbee port/ local bus

Cost-saving custom and depopulated boards available- call!



**Ask us about custom boards for cost-sensitive high volume applications or high-reliability environments!**