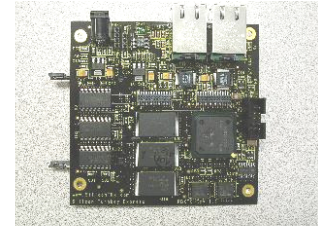


XTc Single Board Computer and ODM Reference Board



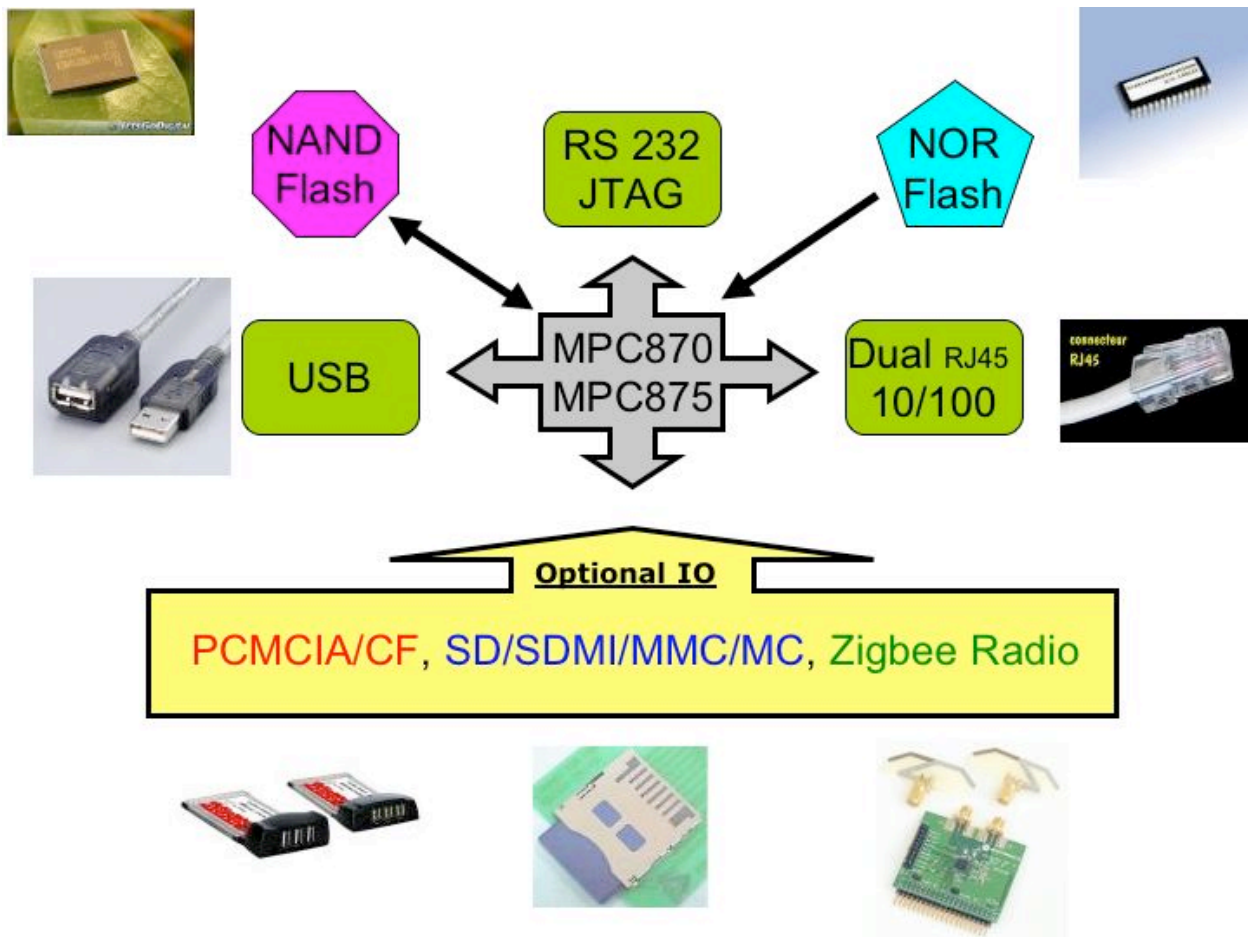
- General purpose industrial control SBC
- Industrial wireless access point
- Lowest cost secure server
- Zigbee internetworking gateway

XTc SBC



Based on the Freescale PowerQUICC 1 MPC870 or MPC875

XTc Block Diagram



**Silicon Turnkey Express, WWW.SiliconTKx.com
 749 Miner Road Cleveland, Ohio 44143
 PH 440 461 4700 x 176, 183 FAX 440 461 4329**

Pricing- includes opensource linux BSP!

Qty 1-9 \$249

Qty 10-99: \$149

Qty 100-999: \$99

Call for large volumes- cost **under 40\$** USD available

Fully Loaded Board

You get: CF, 2 enet, serial, Nand flash, Nor flash (1 or 2), BDM/Jtag, Zigbee port/ local bus

Cost-saving custom and depopulated boards available- call!

MPC87x features

2 independent 10/100 e-nets

66 - 133Mhz 32bit PowerPC

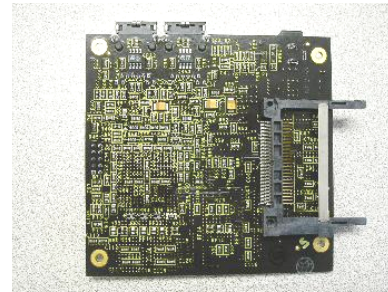
Hardware encryption (875 only)

Optional microcode

User defined serial ports

JTAG/BDM port

RS-232 port



XTc specific features

Local bus/ Zigbee port

CF card interface option

Single or dual 8 bit Nor flash

Single Nand flash option

Ask us about custom boards for cost-sensitive high volume applications or high-reliability environments!

Ordering information

XTc-870S-XXX

XTc-875S-XXX

(3 digit clock speed e.g. 066)

With every board you get: wall power supply, cable kit (Serial, Ethernet), warranty card, PDF schematic, & software resource CD.

Applications include: Zigbee internetworking gateway, stateful packet management routing at line rate, deterministic IP and ATM inter-networking, network security , VOIP/telecom gateway, high-speed test & measurement, industrial networking, general embedded computing